

Slide Show Help Contents

By **DIEGO/Logic**

Slide Show is a graphical interface to Bob Montgomery's VPIC®.

While *Slide Show* was designed to aid in creating slide show files and to simplify using VPIC®, it also will run VPIC® in single file mode with most of the useful command line switches.

I hope you find both this program and VPIC® useful.

Slide Show

[Menus](#)

[Controls](#)

[Requirements](#)

Building And Viewing A Show

[Selecting Pictures](#)

[Selecting View Options](#)

[Choosing View Mode](#)

[Viewing The Slide Show](#)

Shareware

[Registration Information](#)

[Copyright Information](#)

[Product Support](#)

Slide Show Menus

File Menu

[Save Slide Show](#)

[Single File Option](#)

[Set Host](#)

[Select Attributes](#)

[Exit](#)

Help Menu

[Contents](#)

[Search](#)

[Help On Help](#)

[About](#)

Slide Show Controls

File Selection Controls

Use the following controls to select the files to be included in your slide show.

[File and Directory ListBox](#)

[Drive ComboBox](#)

[File Format Specifiers](#)

[Copy Button](#)

[Copy All Button](#)

[Delete Button](#)

[Delete All Button](#)

[Slide Shows ComboBox](#)

Mode and View Controls

Use these controls to select the viewing mode and the view options.

[View Mode](#)

[Delay](#)

[Cycle](#)

[Maximize On View](#)

Configuration

[Save Settings On Exit](#)

Slide Show Requirements

Both *Slide Show* and VPIC® are shareware programs. You are expected to register each with their respective authors.

To run *Slide Show* the following are required:

- n Microsoft Windows 3.x
- n DOS 3.1 or higher
- n VPIC® by Bob Montgomery

(*Slide Show* will run without VPIC®, but it does not have the ability to display images or slide shows on its own.)

[Registration Information.](#)

Selecting Pictures

Selecting Graphic File Formats.

From the **Format** group, select the different graphic file formats to include in the **File/Directory** list. As each format is selected, the **File/Directory** list is automatically updated.

To quickly select all of the formats that VPIC® is capable of displaying, choose **All**.

Selecting A Directory.

Using the **Files/Directories** listbox, select the directory that contains the files you want to view.

Use your mouse to navigate through the directories listed in the **Files/Directories** list. To move to a listed directory double click on the name or highlight the name and press 'Enter'. To move to the parent of the current directory, double click on the **[..]** entry or highlight it and press 'Enter'.

Select a drive from the **Drives** combobox.

Selecting Files.

There are three ways to select the files for your slide show.

- n Highlight a file in the **File/Directories** list.
Select the **Copy** button.
The file name, with the path, will be copied to the **Selected Files** list.
- n Double click a file in the **Files/Directories** list.
Again, the file name and path will be copied to the **Selected Files** list.
- n Press the **Copy All** button.
All files in the list will be copied to the **Selected Files** list.

Deselecting Files.

There are also three methods to remove files from the **Selected Files** list.

- n Highlight a file in the **Selected Files** list.
Press the **Delete** button.
- n Double click a file in the **Selected Files** list.
- n Press the **Delete All** button.
All selected files will be removed from the **Selected Files** list.

Selecting View Options

Use the controls in the View Options group to adjust the length of time images are on screen, to cycle once or continuously through the list, and to have the *Slide Show* window automatically maximize before starting the slide show.

Delay Between Images.

Enter the number of seconds you want the images to remain on the screen. Either type in the value or use the scroll buttons to adjust the length of time.

VPIC's default length is five seconds. If no value is in the box, expect that delay.

The minimum duration is one second.

The maximum duration is 600 seconds (ten minutes).

If you enter zero, VPIC will default to five seconds.

Cycle.

Choose whether to go through the list once only, or to loop continuously.

VPIC can be halted at any time by pressing the **ESC** key, or halted after displaying the current image by pressing the **RETURN** key on your keyboard.

(For some reason when cycling through the list only once, VPIC will not show the last file for the specified duration. Therefore, the last file is specified twice and displayed once for the duration and flashed once again on the screen.)

Maximize On View.

Check this box to keep Windows from having to paint all open windows upon return from the slide show. Useful when experimenting with this program.

Choosing View Mode

Although *Slide Show* is designed to make it easy to use VPIC's slide show mode, it can also run VPIC ® in single file mode.

Slide Show Mode.

Slide Show can display files in any single directory. Changing directories removes all files from the **Selected Files** list.

Saving a slide show.

A slide show of selected files can be save and later reloaded.

To save a slide show choose **Save Slide Show...** from the **File** menu or press **Control+s**. Type a file name (no extension please) in the dialog box. The file is saved in the current directory and can be reloaded and displayed at any time by *Slide Show*.

Loading a slide show.

To load a saved slide show select a name from the **Slide Shows** combo box. All of the files will be entered into the **Selected Files** list.

Single File Mode.

VPIC has a number of options available in single file mode.

Not all are included in *Slide Show*.

The following are available from the **Single File Options...** selection on the **File** menu (press **Control+o**).

- n Auto Resolution Mode. -- Determines the resolution of the image and switches to it if your video card supports it.
- n Beep. - Will beep when finished decoding or displaying the image.
- n Save Pictures. -- Saves the file to the directory VPIC was started from. Good for saving CD ROM pictures.
- n 16 Color Mode (EGA). -- Displays the pictures in EGA mode.
- n Wait On Keypress. -- Waits for a keypress after each image in a multi-image GIF file.
- n No Filename. -- Suppresses the display of the file name on screen.

Viewing The Slide Show

Once you have selected the files to include in the slide show and have selected the desired view options, simply press the **'View'** button to start the show.



[Selecting Pictures](#)

[Selecting View Options](#)

[Choosing View Mode](#)

Registration Information

Thank you for trying *Slide Show*.

Slide Show

Ordering by check: Send a check for \$10.00 (US funds only) payable to Gene Carman at:

DIEGO/Logic

38921 Riverbank Terrace

Fremont, CA 94536-4271

Ordering with CompuServe's Software Registration Service: enter GO SWREG at the ! prompt and follow the menus. *Slide Show's* Registration ID is **1363**.

You will be sent the latest version of *Slide Show* without any nag-ware.

Please specify the size disk you prefer (3½ or 5¼).

If you use *Slide Show* to do anything other than take up disk space you are expected to pay for it.

VPIC

You can register VPIC® by sending a check for \$15.00 to:

Bob Montgomery, VPIC Inc.

543 Via Fontana, #203

Altamonte Springs, FL 32714-3172

Copyright Information

Copyright Notice and Disclaimer.

Slide Show v1.0

Copyright © 1993 by **DIEGO/Logic**, all rights reserved.

DIEGO/Logic

38921 Riverbank Terrace
Fremont, CA 94536-4271

This product makes no claims to the accuracy of its results or safety of its use. While this program is not based on any other program, and while parts may be similar to other products, all of this program is the result of original creative effort.

Gene Carman and **DIEGO/Logic** cannot be held responsible for any damage or misconduct arising from the use of this product.

Product Support

All those that register *Slide Show* are entitled to product support. If there are any bugs in *Slide Show*, they will be fixed as soon as identified.

Registered users can receive tech support by calling Gene Carman at (510) 713-8815, 10am to 8pm PST.

Mail can also be sent to Gene Carman on CompuServe, Member ID #72172,3117

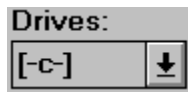
[Registration Information](#)

[Copyright Information](#)

This listbox displays the current directory and all files that match the selected formats and file attributes.

Use it to navigate through your directory tree. Clicking on a directory name (**[name]**) takes you to that directory. Clicking on the **[..]** entry takes you to the current directory's parent.

This listbox displays the current disk drive.
Use it to change drives.



These checkboxes select the types of graphic file formats that will be displayed in the **Files/Directories** listbox. All of the formats currently supported by **VPIC**® are available. To select all of the formats, check the **All** checkbox.

Formats		
<input checked="" type="checkbox"/> <u>G</u> IF	<input checked="" type="checkbox"/> <u>T</u> GA	<input type="checkbox"/> <u>B</u> IF
<input checked="" type="checkbox"/> <u>B</u> MP	<input type="checkbox"/> <u>C</u> UT	<input type="checkbox"/> <u>I</u> FF
<input checked="" type="checkbox"/> <u>P</u> CX	<input type="checkbox"/> <u>L</u> BM	<input type="checkbox"/> <u>M</u> AC
<input checked="" type="checkbox"/> <u>P</u> IC	<input type="checkbox"/> <u>S</u> Cx	<input type="checkbox"/> <u>A</u> ll

Use the **Copy** button to copy a highlighted file in the **Files/Directories** list to the **Selected Files** list. That file will then be included in the slide show.



Use the **Copy All** button to copy all files in the **Files/Directories** list to the **Selected Files** list.
Those files will then be included in the slide show.



Use the **Delete** button to delete a highlighted file in the **Selected Files** list. That file will then be deleted from the slide show.




Use the **Delete All** button to delete all files in the **Selected Files** list. Those files will then be deleted from the slide show.



Use the **Slide Shows** combobox to select a previously saved slide show. Selecting an entry will enter all the files in the slide show into the **Selected Files** list.

Slide Shows:



Use the **View Mode** radio buttons to select either **Slide Show Mode** or **Single File Mode**.

View Mode

Slide Show

Single File

Use the **Delay** control to specify the amount of time each image remains on screen during a slide show.



Use the **Cycle** radio buttons to specify whether the selected files should be displayed only once or looped continuously.

Cycle

Continuous

Once

Use the **Maximize** checkbox to specify whether or not to maximize *Slide Show* before starting the slide show.

Maximize on View

Use the **Save Settings On Exit** checkbox to specify whether or not to save all of the current setting.

Saveable settings are the file format specifiers in the **Formats** groupbox, the settings in the **View Options** groupbox, and the status of the **Save Setting On Exit** checkbox.

Save Setting On Exit

Use this menu item to save the currently selected file names to a permanent slide show file.

You will be prompted to title the slide show. Enter a meaningful name. The show will be stored in a file with that name and a **.sld** extension.

You may later load that saved slide show by selecting it's name from the **'Slide Shows'** combobox.



The image shows a dialog box titled "Save Slide File" with a purple header bar. The main area is light gray and contains the text "Enter a name for the Slide Show file (8 char max):" followed by a text input field. Below the input field are two buttons: "Save" and "Cancel".

Save Slide File

Enter a name for the Slide Show file (8 char max):

Use this menu item to select options for the single file mode.

Those options are:

Auto Resolution

Beep

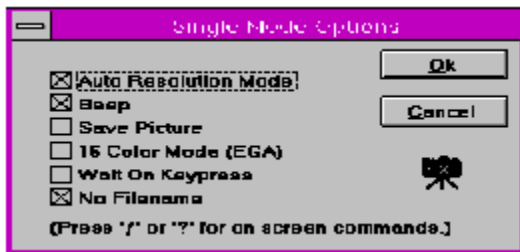
Save File

16 Color (EGA)

Wait

No Filename

These options correspond (in order) to VPIC's switches /a, /b, /d, /e, /w, and /z.



Use this menu item to permanently store the path to VPIC ®.

A dialog box will appear with an edit field. Type in the full path and name of VPIC.

Press the **'Ok'** button to store the path; press the **'Cancel'** button to cancel.



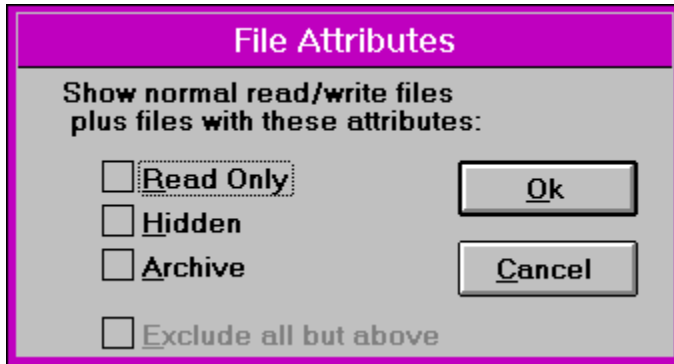
Use this menu item to bring up a file attribute dialog box.

Slide Show's **Files/Directories** listbox will show, at a minimum, directories and all read/write files conforming to the selected file formats. Files with other attributes can also be displayed.

Choose **Select Attributes...** from the **Files** menu (or press **Control+a**).

The resulting dialog box allows you to select **Read Only**, **Hidden**, and **Archive** files.

Checking the **Exclude all but above** checkbox causes *Slide Show* to list only those files with the selected attributes.



Use this menu item to quit *Slide Show*. You can also exit by pressing **Alt+F4**.

Use this menu item to see this help file's **Contents** screen.

Use this menu item to search for help on a topic.

Use this menu item to receive help on using **Help**.

Use this menu item to see copyright and version information, and credits for *Slide Show*.

